

### Pathway Option Now available

The **GL520** is now available with a dedicated pathway optic. The **GL520** was designed in New Zealand and manufactured specifically to comply with the relevant sections of the AS/NZS1158.6 standard.

The GL520 incorporates the Betacom Photon LED Module, **now available with improved higher flux values**. Into a quality casting based on the successful GL500. This new casting, redesigned specifically for LED technology provides excellent thermal performance.

The low profile visor has been developed to create exceptional spacing with an UWLR of 0%.

Backed by a **10 year warranty** the GL520 will continue to provide the best total cost of ownership over the life of the luminaire.

### Key Features

- Designed for Australian and New Zealand conditions.
- CMS Ready, available with 5 or 7 Pin Nema base.
- UWLR = 0%.
- IP66 (entire luminaire).
- Powder coat finish, Dulux Silver. (Other colours on request)
- Light weight and easy to install.
- Locally designed precision optics.
- Cree LED's.
- Colour temperature: 4000°K.
- Colour rendering Index:  $\geq 70$ .
- LED module temperature protection.
- Surge Protection: 10kV/10kA.



### Installation

Light weight 3.2kg, easy to install, accepts spigot sizes from 25mm to 44mm O.D.

### Materials

- Head Casting: High pressure die cast from corrosion resistant aluminium.
- Visor: Low profile high Impact acrylic - UV Resistant
- Fasteners: All fasteners, clips, hinges and bolts are made from stainless steel or aluminium.
- Mounting Clamp: Stainless steel.

### Quality System

Betacom operates an externally audited and registered quality system that complies with AS/NZS ISO 9001.

### Photometric Data

All photometric data is produced in our independently audited and accredited Photometric Laboratory. Betacom's laboratory is accredited by IANZ (International Accreditation New Zealand).

### Lighting Design Service

Betacom provides a comprehensive lighting design service. This service is available free of charge to our customers. Designs are provided in accordance with AS/NZS 1158.1.1 and AS/NZS 1158.3.1.

### Warranty

The GL520 is covered by a **10 year warranty**.

### Options

- Photocells, both NEMA and SS12A.
- Pole top adaptor bracket.
- Autonomous flexible dimming profiles.
- Internal tilt adjustment ( $\pm 5^\circ$ ,  $10^\circ$  and  $15^\circ$ ).
- Warm white 3000k



## Specifications

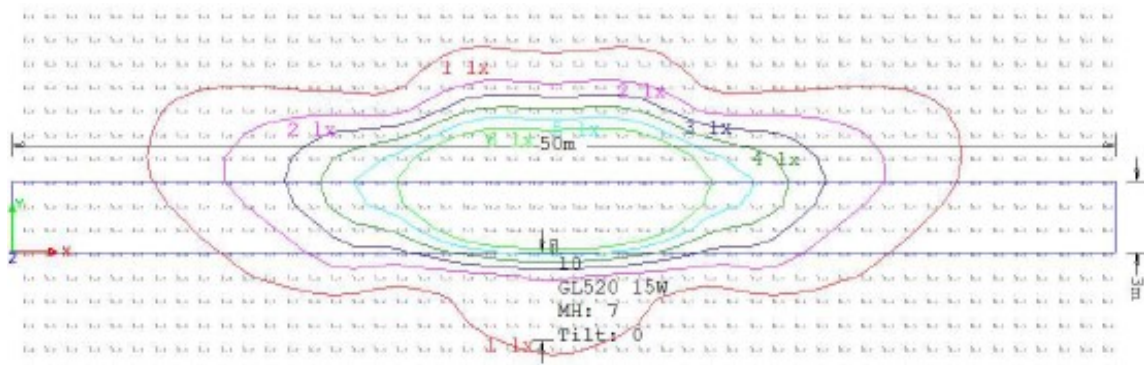
### Electrical

Input Voltage	120 - 277 VAC, 50/60Hz
Total Harmonic Distortion (THD)	< 20%
Power Factor	> 0.9
Surge Protection <sup>1</sup>	10kV/10kA
Driver Design Life	100,000 hours

LED Type	Cree
Colour Temperature (CCT)	4000°K
Colour Rendering Index (CRI)	≥ 70

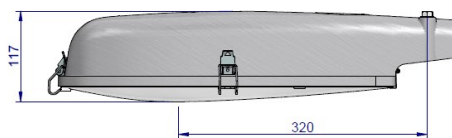
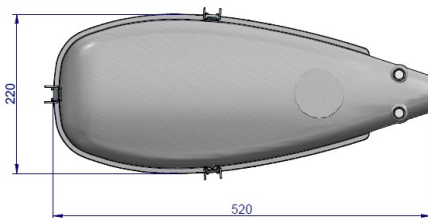
### Typical Performance<sup>2</sup> (Refer Technical Bulletin)

Driver Current (mA)	200mA
Total System Power (W)	16W
Lifetime Residual Flux (L90) <sup>3</sup> @ Ta = 25°C <sup>4</sup>	> 100,000 hours



- 1: Surge protection levels are based on the luminaire being installed on a MEN (multiple earth neutral) network. Options are available for non MEN installations or for areas that are prone to a high level of lightning activity. Please contact Betacom for more information.
- 2: The above data are typical values only, for the complete set of data please refer to the Technical Bulletin available from the resource section of Betacom's website.
- 3: L90 means that after the number of hours indicated, the luminaire maintains 90% of its initial luminous flux.
- 4: TM-21-11 reports for the luminaire are available on request. LM80-08 data is also available for the Cree XT-E LED used in the luminaire. This data is used for calculation of the lumen depreciation projections for the luminaire and is based on actual temperature measurements within the luminaire.

## Dimensional Data



Weight: 3.2kg  
Horizontal projected area: 0.07m<sup>2</sup>  
Coefficient of drag: 0.64

*Please note that due to continuous advancements in LED technology and also ongoing product development these specifications are subject to change without notice.*

# BETACOM

**Betacom (1988) Limited**  
PO Box 19952, Christchurch  
8241,  
New Zealand

Phone: +64 3 384 4049  
Fax: +64 3 384 4603  
Email: sales@betacom.co.nz