

CITTEA+NUN', ALVARES





# CITEA+NUN'ALVARES

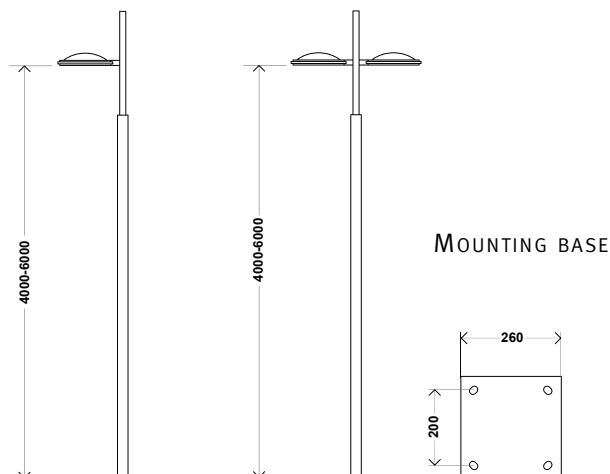


# 4 - 6 - 8m

## SMALL MODELS

POLE WITH  
SINGLE MOUNTING

POLE WITH  
DOUBLE MOUNTING



## BROAD RANGE OF CONFIGURATIONS, SIZES AND SOURCES

The Nun'Alvares ensemble was specifically developed for the Citea luminaires. The Citea range is available in three sizes (Mini, Midi, Maxi). Any combination of sizes can be envisaged depending on the power desired. This ensemble is available in multiple configurations and in several heights. This large selection enables the urban designer to utilise the Nun'Alvares range for different lighting applications.

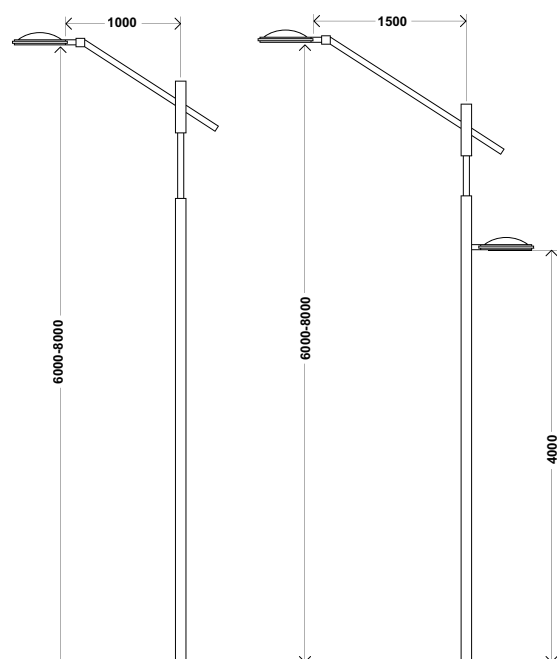
The large models – with rear bracket – are suitable both for lighting large avenues and sidewalks. There is also the flexibility offered by the large model, which is available with two bracket sizes. This allows the light to be projected for varying distances onto the road. The small models – with single or double brackets – can be installed along streets and squares in city centres. This aesthetic coherence between the suburbs and the city centre is one of the main strengths of the Nun'Alvares range. The lighting column is composed of a rectangular profile with a longitudinal opening at the top of the pole. Depending on the configuration, the lighting column is provided with a bracket displaying the same aesthetic characteristics. The Citea luminaire may also be mounted on a catenary for axial suspension.

Colour: equivalent to AKZO 900 sanded grey  
Other colours on request  
Other lighting column heights are available

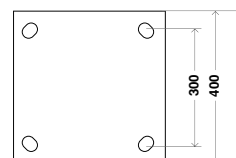
## LARGE MODELS

POLE WITH  
1000 BRACKET

POLE WITH  
1500 BRACKET  
+ REAR BRACKET



## MOUNTING BASE



Other mounting  
configurations on request



## CHARACTERISTICS – LUMINAIRES

Optical compartment tightness level:	IP 66 Sealsafe® (*)
Control gear tightness level:	IP 44 (Mini: IP 54) (*)
Impact resistance: - flat glass:	IK 08 (**)
- curved polycarbonate:	IK 10 (**)
- curved acrylic:	IK 06 (**)
Aerodynamic resistance (CxS):	
- Mini:	0,062 m <sup>2</sup>
- Midi:	0,080 m <sup>2</sup>
- Maxi:	0,095 m <sup>2</sup>
Nominal voltage:	230 V – 50 Hz
Electrical class:	I or II (option) (*)
Weight (empty):	
- Mini:	7,5 kg
- Midi:	10 kg
- Maxi:	15 kg

(\*) according to IEC - EN 60598

(\*\*) according to IEC - EN 62262

## THREE SIZES, MULTIPLE PHOTOMETRIC SOLUTIONS

Made completely of aluminium and glass, the Citea luminaire is available in three sizes (Mini, Midi and Maxi). This extended range allows multiple combinations of luminaires on the Nun'Alvares lighting column. It is also a guarantee for diversity with regard to light sources and light distribution. Any type of lamp commonly used in urban settings can be incorporated, for power ratings varying between 70 and 400 W. Depending on the size, the Citea luminaire is available with a selection of four reflectors. The timeless design of the Citea fits in perfectly in any urban environment, whether traditional or contemporary. As an option, a system of louvres makes it possible to control the forward or backward light flux.

Colour: AKZO grey 900 sanded

Other colours on request

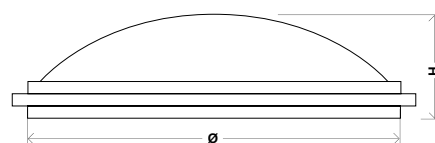
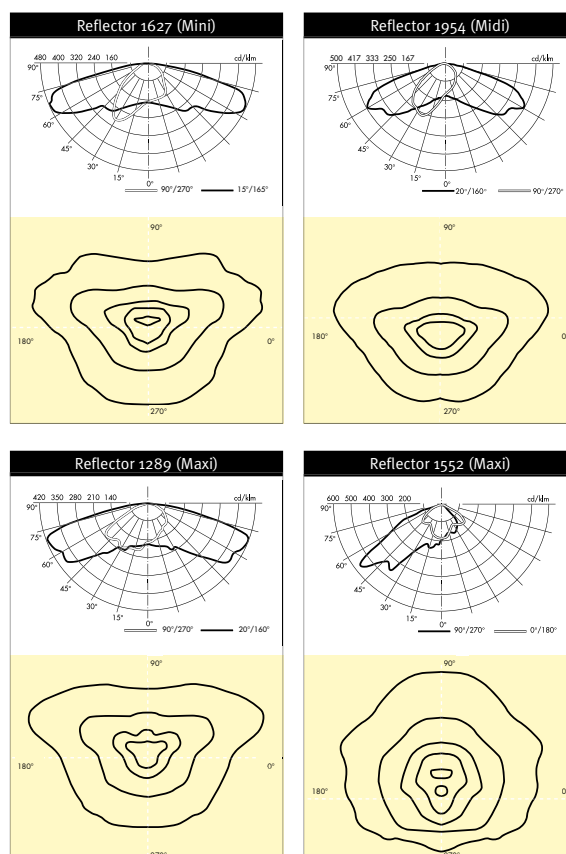
## LAMPS – REFLECTORS

Models	Mini	Midi	Maxi
Reflectors	1627	1954 1552 (*)	1289 1552 1954
High-pressure sodium	150 W	250 W 250 W	400 W 250 W 250 W
Metal halide	150 W	250 W 250 W	400 W 250 W 250 W
Metal halide with ceramic arc tube	150 W	250 W 250 W	- 250 W 250 W
Cosmopolis	140 W	140 W -	- 140 W 140 W

Maximum power ratings

(\*) Control gear not built in for the 250 W version

## LIGHT DISTRIBUTION



Citea	Mini	Midi	Maxi
Ø	490 mm	590 mm	675 mm
H	167 mm	190 mm	230 mm

## THREE SIZES

The Citea luminaire is available in three sizes: Mini, Midi and Maxi. It is comprised of a crown and a transition plate made of cast aluminium under a dome in spun aluminium. The optical unit – which is supported by the transition plate – is made up of a reflector constructed of deep drawn, polished and anodised aluminium (or metallised synthetic material) and a protector made of flat glass. A protector made of polycarbonate or slightly rounded acrylic is optional.

## INSTALLATION UP TO 12 METRES

The remarkable efficacy and photometric diversity of the Citea range allows installation at heights between 4 and 12 metres.

### INTEGRAL FLOODLIGHT

As an option, to illuminate foliage, the dome of the Citea Midi luminaire can house a floodlight for 35 or 70 W metal halide lamps with ceramic arc tubes.

A choice can be made between a symmetrical or asymmetrical (60°) reflector that can rotate through 360° in increments of 45°. The protector is made of clear (asymmetric photometry) or prismatic (symmetric photometry) glass.

## MAINTENANCE

The luminaire is opened, without tools, by loosening one 1/4-turn screw (two for the Maxi version) and tilting the transition plate supporting the Sealsafe® (IP 66) optical unit sideways on a hinge.

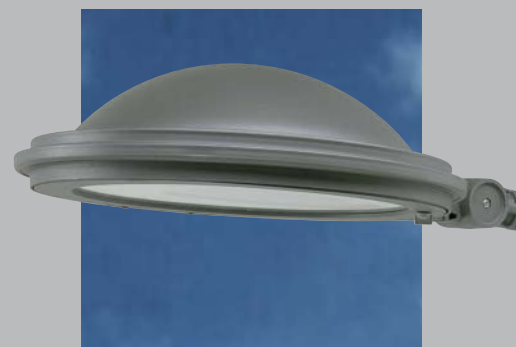
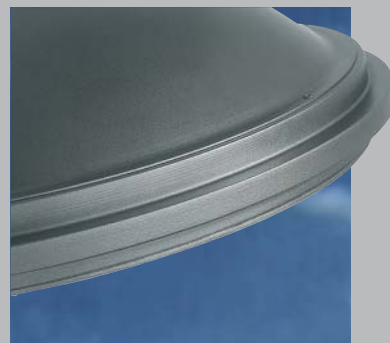
This operation gives access to the control gear plate and the lamp support plug.



Mini

Midi

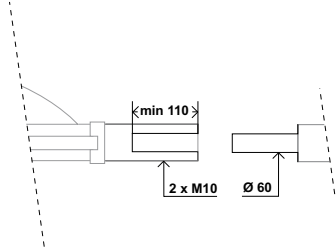
Maxi



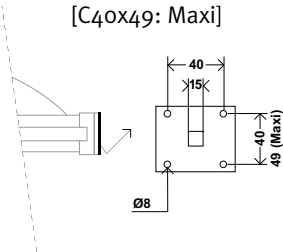
SIDE ENTRY MOUNTING

DIRECT SIDE ENTRY MOUNTING

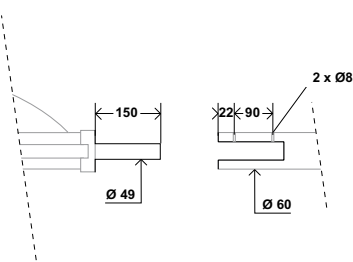
- female, on a plain spigot [D6oF]



- square [C4oX4o: Mini - Midi]  
[C4oX49: Maxi]

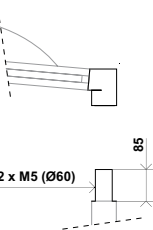


- male, on a female spigot [D6oM]

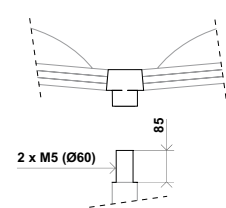


POST-TOP MOUNTING (MINI - MIDI)

- single [S-D6oF]

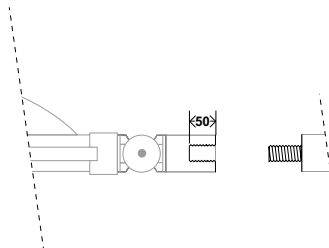


- double [D-D6oF]

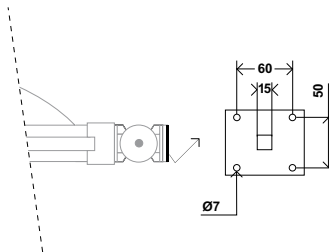


SIDE ENTRY MOUNTING WITH KNUCKLE-JOINT

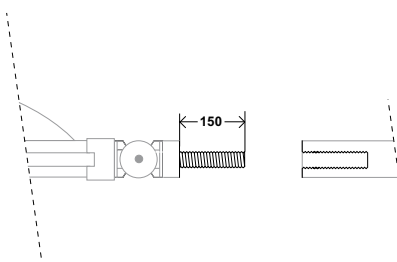
- female, on a 1" BSP threaded tube [R/G34F]



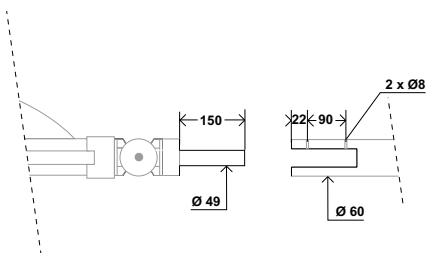
- square [R/C 6oX5o]



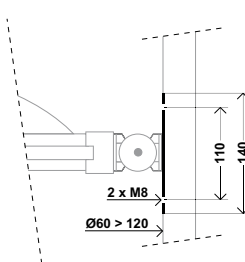
- male, on a 1" female threaded tube [R/G34M]



- male, on a female spigot [R/D6oM]



- direct wall or pole mounting



Note: for mounting on a wooden pole,  
a mounting plate is required



BROAD RANGE OF CONFIGURATIONS, SIZES AND SOURCES

CITEA + FILIA  
Carpentras  
France



CITEA + AUBIS  
Fuggi  
Italy



CITEA + CORNALINE  
Palermo  
Italy





CITEA  
Montijo  
Portugal



CITEA + AUBIS  
Toulon  
France



CITEA + FILIA  
Monceau  
France



CITEA  
St-Denis  
France



CITEA  
Cape Town  
South Africa









## THE URBAN LIGHT